

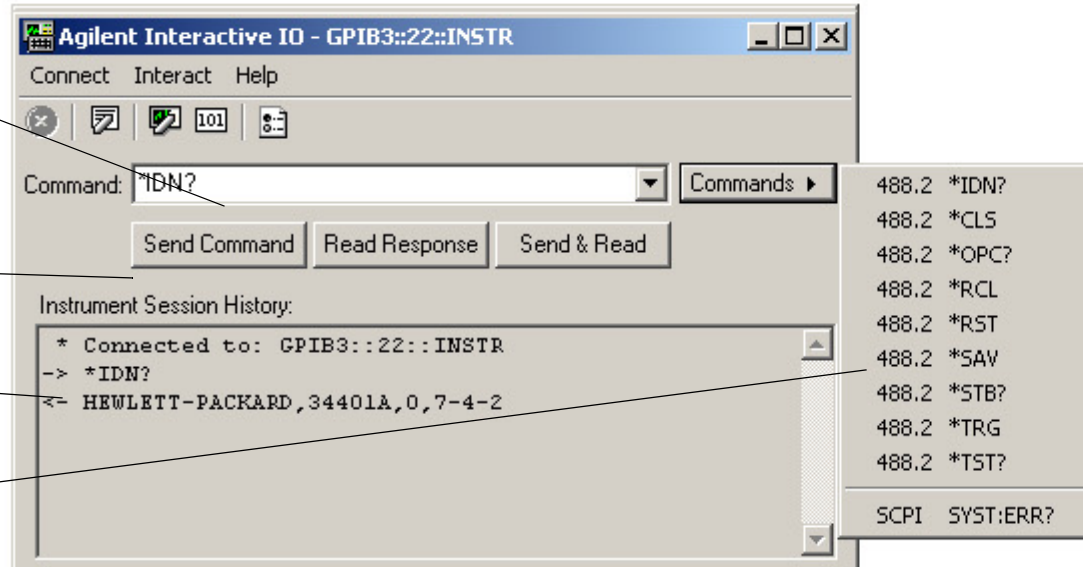
From the Visual Studio main menu select T&M Toolkit > **Interactive IO**

Enter a command or query here or select from the command list.

Send, Read, or Send/Read the command or query.

Review the session history here.

Command list.



# Agilent T&M Toolkit with Test Automation

Optimized for



For full information and pricing, go to:  
<http://www.agilent.com/find/toolkit>

Agilent T&M Toolkit makes Microsoft® Visual Studio® a great test and measurement environment. The T&M Toolkit brings engineers easy-to-use software tools and components for instrument control and automation applications. The T&M Toolkit's instrument discovery, rich class libraries, and graph controls are designed to simplify your job. You can connect and test your instruments and acquire, analyze, and graphically display your data.

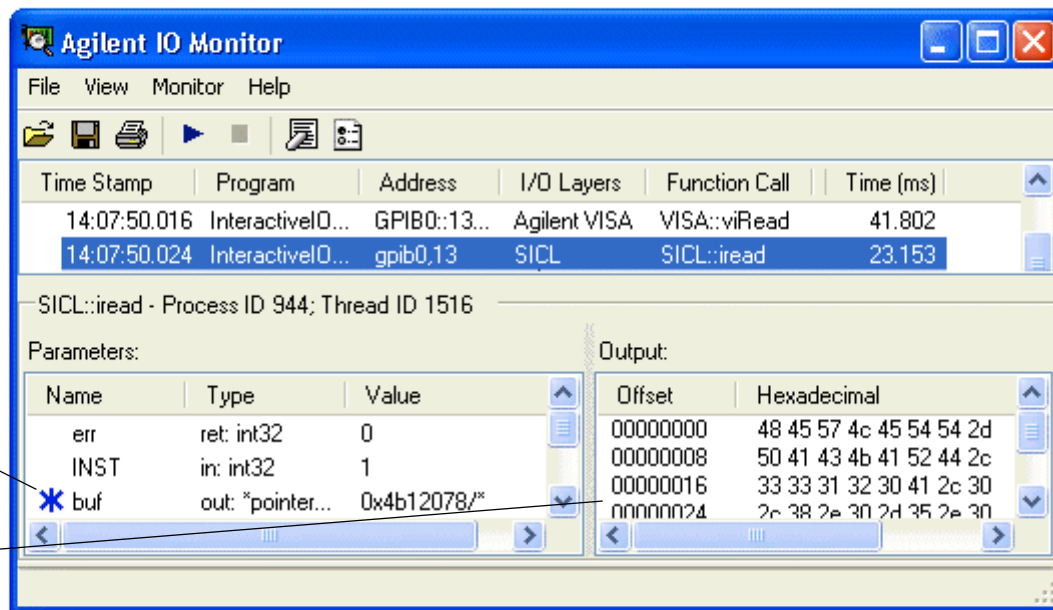
T&M Toolkit now includes Test Automation. Test Automation simplifies the creation of tests for design validation. The features of Test Automation include: create sequence definitions using a variety of features including looping structures; user-defined variables; debugging tools; graphing results; export of results to Excel, CSV, and text files; and DLL import.

T&M Toolkit has also added the Spectrum data type and support library, the Waveform data type and support library, the Matrix math and operations library, the Polynomial Regression library, and the Results Management library.

From the Visual Studio main menu select T&M Toolkit > **IO Monitor**

Traces I/O layers for VISA, VISA COM, SIDL, and SIDL Detail

Input buffer for the chosen trace  
Debug I/O code



Microsoft, Visual Studio, and the Visual Studio logo are trademarks or registered trademarks of Microsoft Corporation in the United States and/or other countries.

From the Visual Studio main menu select T&M Toolkit > **Test Automator**

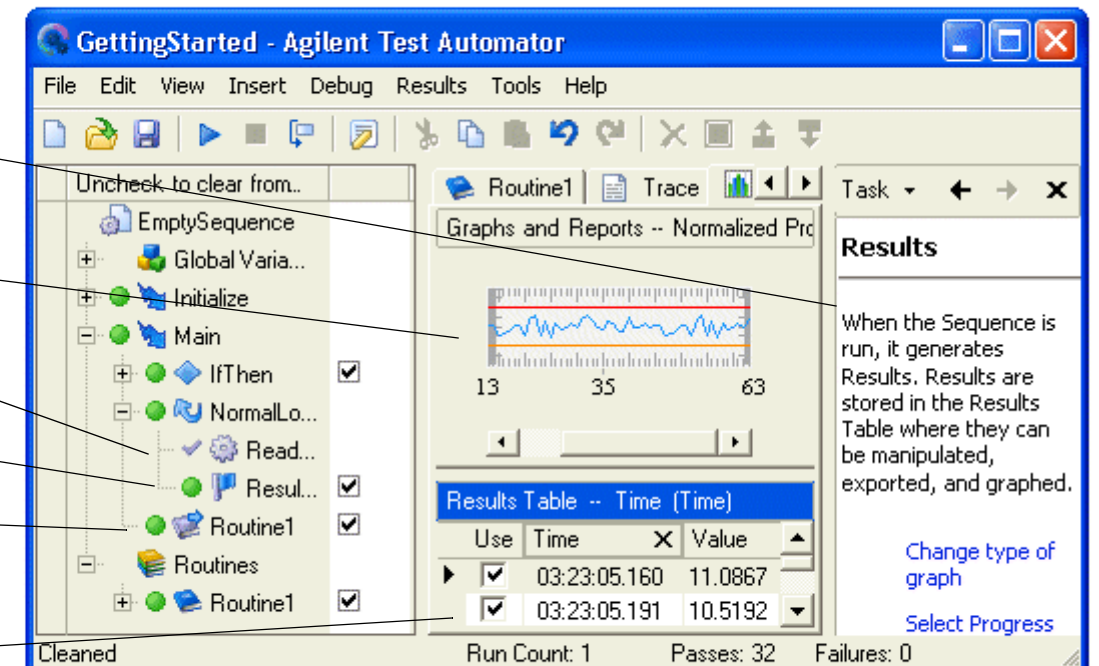
Task Guide makes tasks clear and straightforward

Graph your results

A Method; Properties are also supported

Limit Check  
Call local and external sequences

Select, print, sort, and export data as Excel, text, or csv.



When the Sequence is run, it generates Results. Results are stored in the Results Table where they can be manipulated, exported, and graphed.

Change type of graph  
Select Progress

# Agilent T&M Toolkit

From the main menu, use T&M Toolkit tools by selecting the T&M Toolkit menu item or by clicking a T&M Toolkit icon.

Notice the Test Automator application. The Test Automator is designed to simplify the creation of R&D tests for design validation and prototype testing. These sequenced tests are created in a straightforward editor, and the data is managed and exported (text, csv, or Excel) from a full-featured results management table with accompanying graphics.

Start Instrument Explorer and find instruments connected to your PC. Use a \*IDN? to identify instruments by manufacturer and type. Configure instrument I/O connections. Drag-and-drop instruments into your code.

T&M Toolkit Help is fully integrated into Visual Studio Help. All of these class libraries have online help, there are tutorials, sample programs, and the F1 key provides help with a single keystroke.

A Toolbox tab provides access to the 2D Graphics Objects

The Function Waveform Generator creates virtual waveforms for demonstration purposes

Notice the Visual Studio feature, Dynamic Help. Turn this on from the main menu, Help | Dynamic Help, for help about .NET and the T&M Framework.

AgilentTMTToolkit1 - Microsoft Visual Basic .NET [design] - Form1.vb [Design]\*

File Edit View Project Build Debug Data Tools T&M Toolkit Window Help

- Getting Started
- Instrument Explorer
- Test Automator
- Interactive IO
- IO Monitor
- Driver Wrapper Wizard
- VEE Wrapper Wizard
- Product Key
- Help

Agilent Instrument Explorer Start Page

STRMAC2 Master Configuration Fi

- GPIB3
  - HP 33120A #2 (::11)
  - HP 34401A (::22)
  - HP 34970A (::7)

**Instrument Details**

Name: HP 33120A #2  
Description:  
Resource Name: GPIB3::11::INSTR  
Connection Status: Unknown  
Device Name: gpib0,11  
Hostname: jetscrm3.lvd.agilent.com  
IDN Response:  
HEWLETT-PACKARD,33120A,0,7,0-5,0-1.0  
IP Address: 156.140.112.60  
Interface Protocol: SICL-LAN  
Primary Address: 11  
Secondary Address: None

**Projects**

- Get Started
- What's New
- Online Community
- Headlines
- Search Online
- Downloads
- XML Web Services
- Web Hosting

**Agilent Test and Measurement Toolkit**

The Agilent T&M Toolkit is a suite of tools and libraries for building el

Form1.vb [Design]\*

Form1

**WaveformGraph**

YAxis

XAxis

100.0 V  
75.00 V  
50.00 V  
25.00 V  
0.000 V  
-25.00 V  
-50.00 V  
-75.00 V  
-100.0 V

0.000 s 20.00 s 40.00 s 60.00 s 80.00 s 100.0 s

**Contents**

Filtered by:  
(no filter)

- Using Agilent T&M Toolkit Utilities
- IVI-C and IVI-COM Instrument Drivers
- Calling Agilent VEE Pro
- Samples
- VXIplug&play Driver Reference
- T&M Framework Reference
- Agilent.TMFramework
- Agilent.TMFramework.ComponentMod
- Agilent.TMFramework.ComponentMod
- Agilent.TMFramework.DataAnalysis
- Agilent.TMFramework.DataVisualization
- Agilent.TMFramework.InstrumentDrive
- Agilent.TMFramework.InstrumentDrive
- Agilent.TMFramework.InstrumentIO
- Agilent.TMFramework.InstrumentIO.C
- Agilent.TMFramework.InstrumentIO.D
- Agilent.TMFramework.InstrumentIO.Ir
- Agilent.TMFramework.ResultsManager
- Agilent.TMFramework.ResultsVisualizal
- Agilent.TMFramework.Sequencing
- Agilent.TMFramework.Sequencing.Des

**Dynamic Help**

- Help
  - Installing Help for Visual Studio
- Samples
  - Samples
- Getting Started
  - Introducing Agilent T&M Toolkit

Properties Dynamic Help